

# AN ADVANCED WAY TO TREAT CHRONIC SINUSITIS.

**1 in 8 adults are affected by Chronic Sinusitis each year, making it one of the most common health conditions in America<sup>1</sup>.**

The sinuses are air-filled cavities located within the bones around the nose and eyes that allow for air flow and drainage. In Chronic Sinusitis, the sinus linings become swollen (inflamed), preventing natural drainage of the pathways, leading to chronic infections and nasal blockage.

Patients with Chronic Sinusitis suffer from symptoms such as:

- Facial pain or pressure
- Nasal congestion & difficulty breathing
- Discolored nasal discharge
- Loss of smell & taste
- Headache
- Fatigue & depression



HEALTHY SINUSES



DISEASED SINUSES

## Treatments for chronic sinusitis

Medications often prescribed for Chronic Sinusitis patients:

- Antibiotics
- Oral steroids
- Nasal steroid sprays
- Decongestants
- Antihistamines

If patients' symptoms continue even with medications, sinus surgery may be an option. During the surgery, the Ear, Nose and Throat (ENT) surgeon will enter the sinuses through the nostrils to open blocked sinus pathways and clean out infection. Opening the inflamed sinus pathways allows the sinuses to drain better and improves air flow.

While surgery provides benefit to many patients, inflammation and scarring can take place even in the first 30 days, diminishing the impact of surgery or causing symptoms to return. There is a new technology that is placed at the time of surgery and clinically proven to reduce inflammation and scarring<sup>2</sup>. Read on to learn more about PROPEL<sup>®</sup>.

Visit [www.PROPELOPENS.com](http://www.PROPELOPENS.com)

# ABOUT PROPEL<sup>®</sup>

## MOMETASONE FUROATE IMPLANT

### PROPEL is clinically proven to improve surgical outcomes for chronic sinusitis sufferers.

When placed in the sinus following surgery, PROPEL decreases scarring and inflammation, reducing the need for additional surgical procedures as well as oral steroids and their potential side effects<sup>2</sup>.

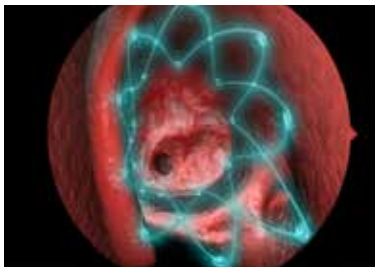
The spring-like PROPEL implant props open the ethmoid sinus to maintain the surgical opening, delivers an anti-inflammatory medication directly to the sinus lining, and then dissolves, avoiding the need for removal.

Talk with your doctor to see if PROPEL is the right option for you.

### Post-operative care

Your post-operative care may include sinus irrigation (e.g. Neilmed Sinus Rinse™, available at most pharmacies), oral antibiotics and pain medicine. Take all of your medication as directed for the best outcomes.

Additionally, after sinus surgery, you may experience some bleeding, drainage and discomfort (e.g. pain, headaches). Sleeping with your head elevated 30 degrees is helpful to reduce sinus swelling and bleeding. Try your best not to blow your nose, bend over, lift heavy objects or physically exert yourself for 1-2 weeks after surgery. If you have to sneeze or cough, keep your mouth open and avoid pinching your nose.



### Specific to PROPEL:

#### General:

- Frequent sinus irrigations (multiple times a day) are very important for the post-surgical healing process.
- Since PROPEL gradually dissolves, you may notice thin white fragments migrate from your nose—this is normal.

#### Post-Operative Visits:

- Try to perform a sinus irrigation immediately prior to each of your follow-up visits.
- At the beginning of your appointment, remind your health care provider that you received PROPEL.

1. Summary Health Statistics for U.S. Adults: National Health Interview Survey, 2012.

2. Han JK, Marple BF, Smith TL et al. Int Forum Allergy Rhinol. 2012; 2:271-279.

The PROPEL sinus implant is intended for use following ethmoid sinus surgery to maintain patency. For more information consult your physician or visit [www.PROPELOPENS.com](http://www.PROPELOPENS.com) to view prescribing information including indications, contraindications, warnings, precautions and adverse events. Caution: Federal law (USA) restricts this product to sale by or on the order of a physician.

© 2014 Intersect ENT Inc. All rights reserved. PROPEL is a trademark and a registered trademark of Intersect ENT, Inc.

MPM 00002 Rev.F